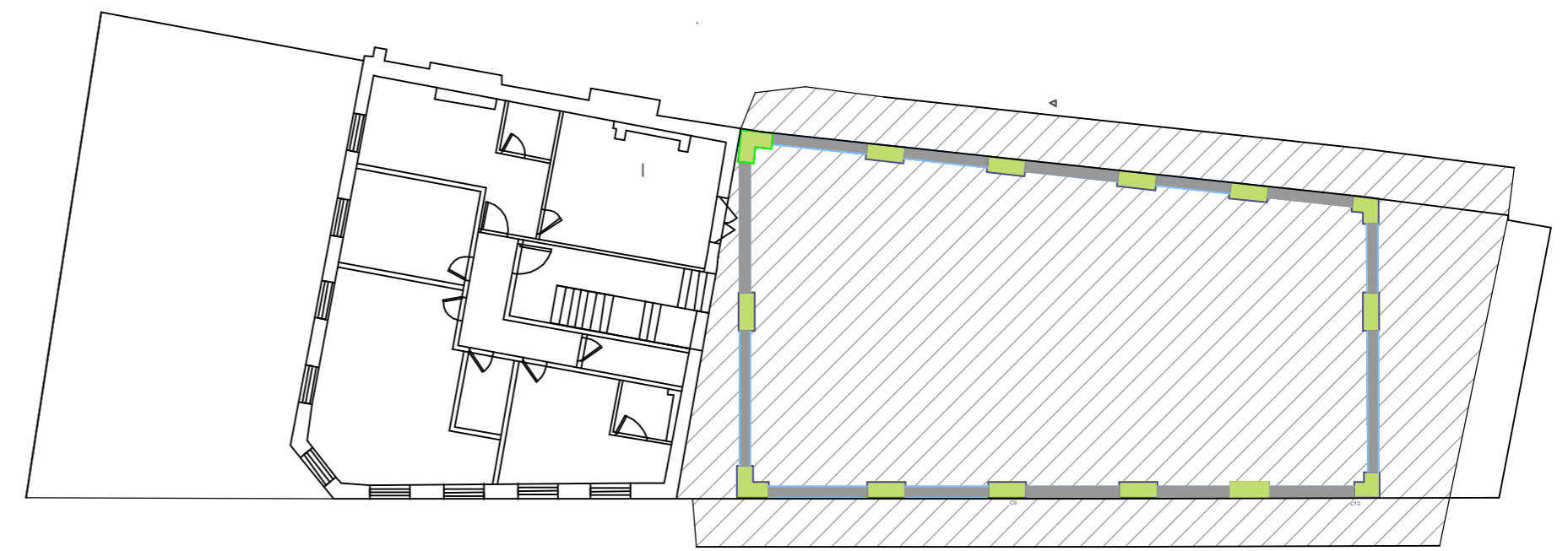
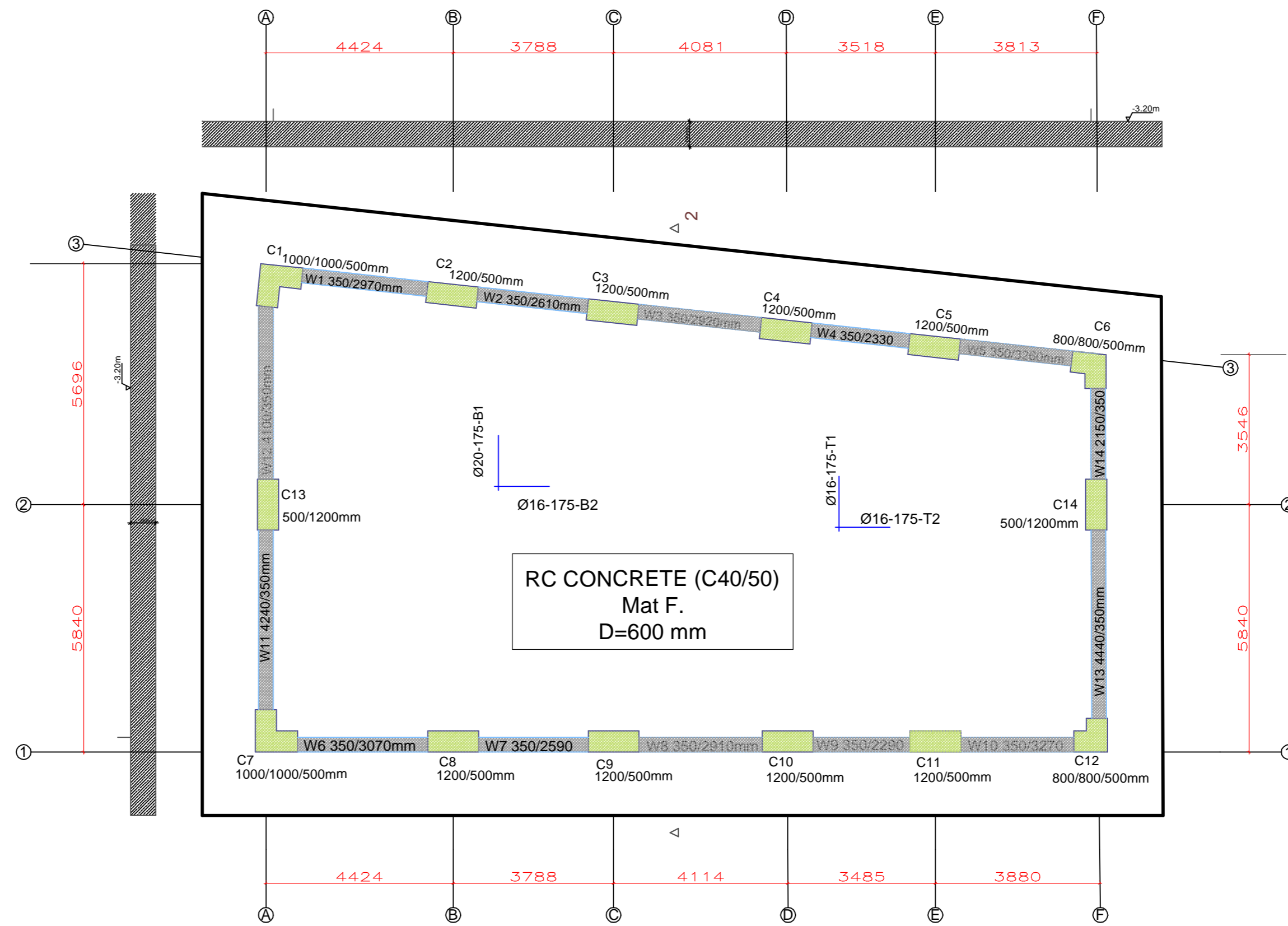
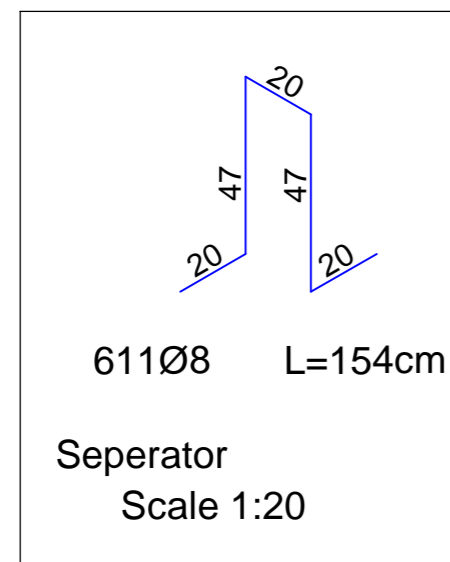


EXISTING GROUND FLOOR DEMOLISHING PLAN
Scale 1:200

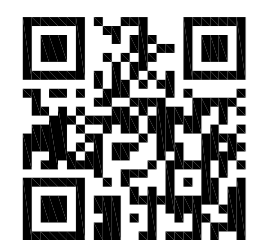


BASEMENT AND FOUNDATION EXCAVATION PLAN
Scale 1:200

Type	Unit Mass [kg/m]	Total Length [m]	Total Mass [kg]
H16	1.579	5528.298	8729.18
H20	2.466	1906.362	4701.09
Total			13430.27
Total + 10.00 % slab detailing allowance			14773.30




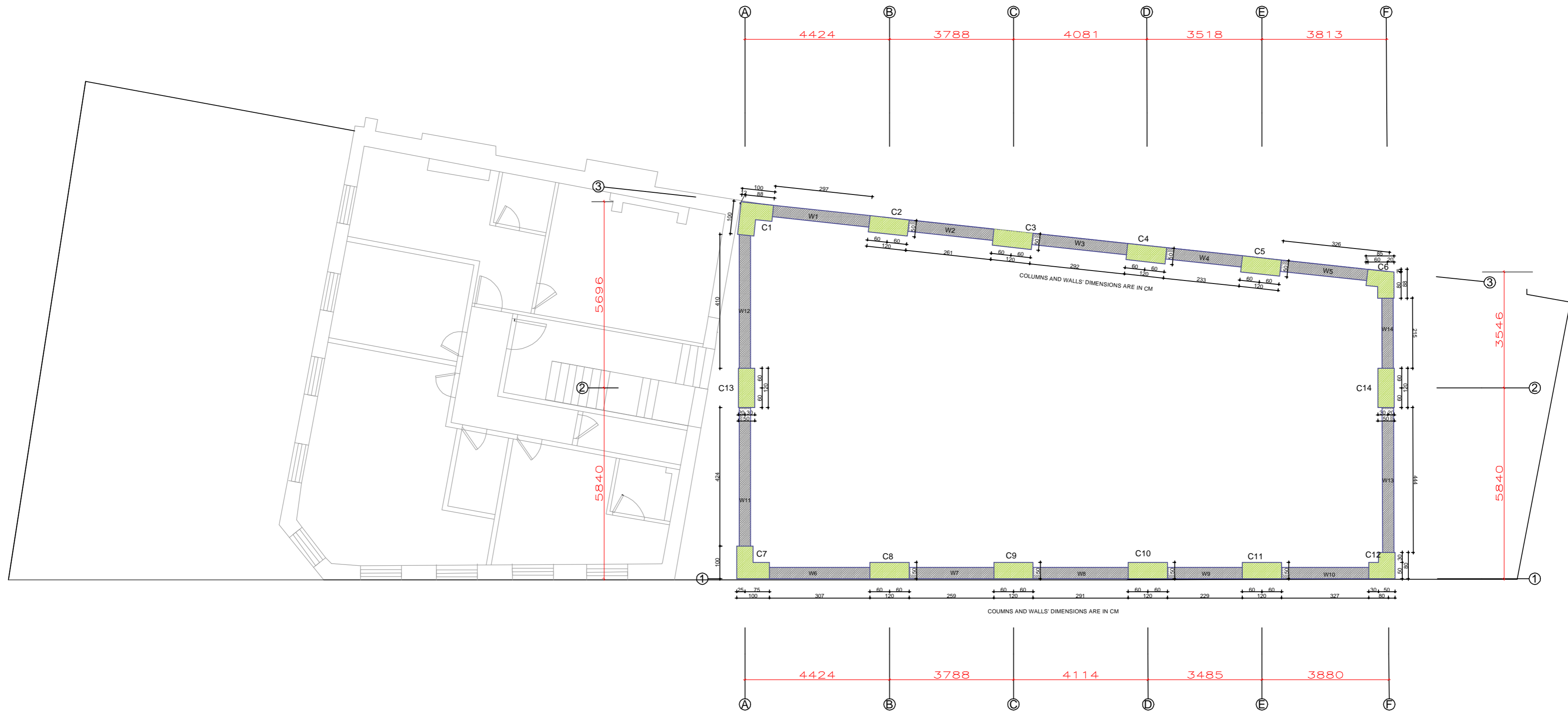
Foundation Layout
Scale 1:100



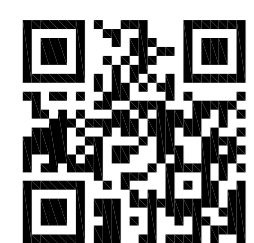
IMPORTANT: SCAN QR CODE TO ENSURE CURRENT REVISION OF STRUCTURAL DRAWINGS AND CALCULATIONS. IF ANY CLARIFICATION IS REQUIRED REGARDING THE STRUCTURAL DETAILS, MATERIALS, OR CONSTRUCTION METHODS THE ENGINEER MUST BE CONTACTED PRIOR TO PROCEEDING WITH THE WORKS.

ALL NOTES IN THIS DOCUMENT MUST BE READ IN CONJUNCTION WITH THE PROVIDED DETAILS AND ALL RELEVANT ARCHITECTURAL AND OTHER DOCUMENTS PLEASE REFER TO THE PLANNING DRAWINGS AND BUILDING REGULATIONS DRAWINGS FOR ACCURATE DIMENSIONS. DO NOT SCALE THESE DRAWINGS. ALL DIMENSIONS ARE FOR CALCULATION PURPOSES ONLY AND MUST BE VERIFIED ON SITE BY THE CONTRACTOR. ALL EXISTING LOAD-BEARING ELEMENT SPECIFICATIONS MUST BE VERIFIED ON-SITE BY THE CONTRACTOR. IF ANY ON-SITE CONDITIONS DIFFER FROM THE ASSUMPTIONS IN THE DRAWINGS, PLEASE NOTIFY THE ENGINEER PROMPTLY. THE CONTRACTOR IS RESPONSIBLE FOR ALL TEMPORARY WORKS TO ENSURE STABILITY AND SAFETY THROUGHOUT THE PROCESS. DO NOT USE THIS DOC WITHOUT BUILDING CONTROL APPROVAL.

Client/Site Address:	Project:	Title:	Drawn by:	 Date: 24/02/2026 Scale: A2	JOB NO: MU240126	REVISION: 0	DRW NO: 1
336 Green Lanes, London N4 1BY	Structural Design & Calculations For Proposed Four Storey New Build	Proposed Foundation Layout	TL				
			Checked by:				




Basement Columns & Walls Arrangement
Scale 1:100



IMPORTANT: SCAN QR CODE TO ENSURE CURRENT REVISION OF STRUCTURAL DRAWINGS AND CALCULATIONS. IF ANY CLARIFICATION IS REQUIRED REGARDING THE STRUCTURAL DETAILS, MATERIALS, OR CONSTRUCTION METHODS THE ENGINEER MUST BE CONTACTED PRIOR TO PROCEEDING WITH THE WORKS.

ALL NOTES IN THIS DOCUMENT MUST BE READ IN CONJUNCTION WITH THE PROVIDED DETAILS AND ALL RELEVANT ARCHITECTURAL AND OTHER DOCUMENTS PLEASE REFER TO THE PLANNING DRAWINGS AND BUILDING REGULATIONS DRAWINGS FOR ACCURATE DIMENSIONS. DO NOT SCALE THESE DRAWINGS. ALL DIMENSIONS ARE FOR CALCULATION PURPOSES ONLY AND MUST BE VERIFIED ON SITE BY THE CONTRACTOR. ALL EXISTING LOAD-BEARING ELEMENT SPECIFICATIONS MUST BE VERIFIED ON-SITE BY THE CONTRACTOR. IF ANY ON-SITE CONDITIONS DIFFER FROM THE ASSUMPTIONS IN THE DRAWINGS, PLEASE NOTIFY THE ENGINEER PROMPTLY. THE CONTRACTOR IS RESPONSIBLE FOR ALL TEMPORARY WORKS TO ENSURE STABILITY AND SAFETY THROUGHOUT THE PROCESS. DO NOT USE THIS DOC WITHOUT BUILDING CONTROL APPROVAL.

Client/Site Address:	Project:	Title:	Drawn by:				
336 Green Lanes, London N4 1BY	Structural Design & Calculations For Proposed Four Storey New Build	Proposed Basement Columns & Walls Layout	TL				
			Checked by:				
				Date: 24/02/2026	JOB NO:	REVISION:	DRW NO:
				Scale: A2	MU240126	0	2

St. -1 (Basement) 3.2 m														
St. Base (Base) 0 m														
Starter bars	20Ø16 C1	16Ø25 C2	16Ø25 C3	16Ø25 C4	16Ø20 C5	18Ø20 C6	20Ø16 C7	16Ø20 C8	16Ø25 C9	16Ø20 C10	16Ø20 C11	16Ø16 C12	16Ø16 C13	16Ø16 C14

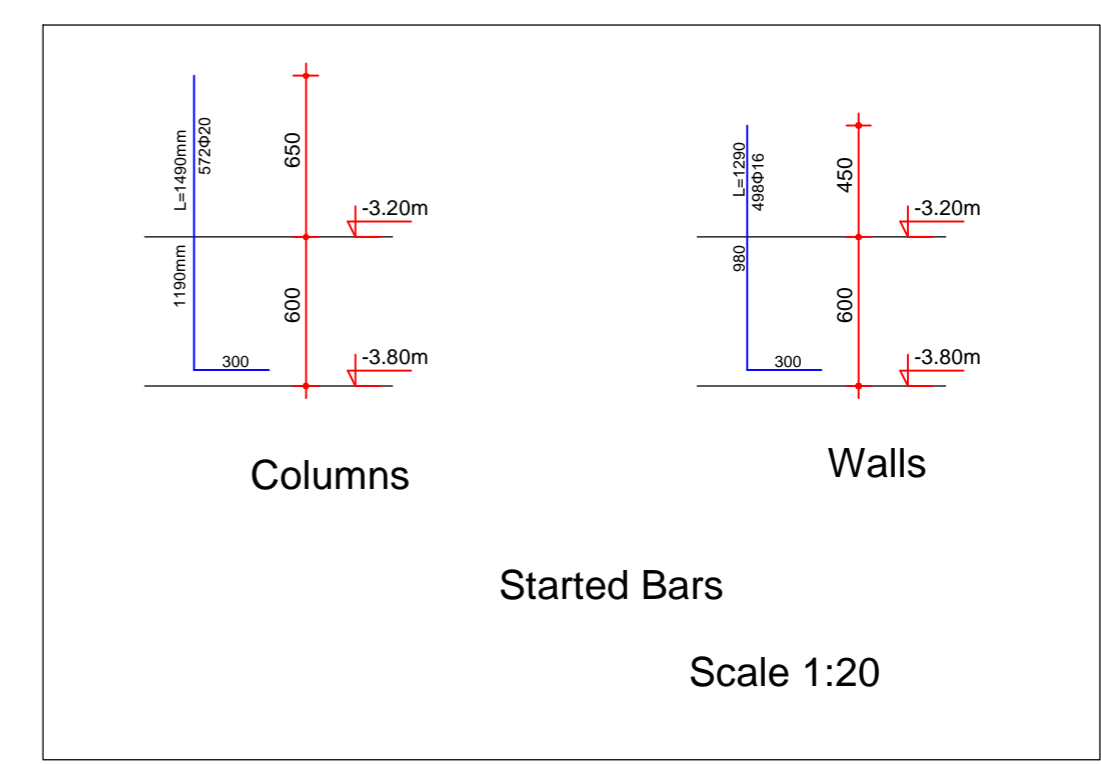
Column Schedule

Type	Unit Mass [kg/m]	Total Length [m]	Total Mass [kg]
Ø16	1.579	3827.500	6043.62
Grand Total			6043.62

Mark	Type	Quantity	Length [mm]	Total Length [m]	Shape	Members
4	Ø16	558	1850.0	1032.300	34	W1, W2, W3, W4, W5, W6, W7, W8, W9, W10, W11, W12, W13, W14
6	Ø16	558	3200.0	1785.600	11	W1, W2, W3, W4, W5, W6, W7, W8, W9, W10, W11, W12, W13, W14
27	Ø16	16	3525.0	56.400	0	W6
28	Ø16	224	1175.0	263.200	21	W1, W2, W3, W4, W5, W6, W7, W8, W9, W10, W11, W12, W13, W14
29	Ø16	16	2900.0	46.400	0	W7
30	Ø16	16	3825.0	61.200	0	W8
31	Ø16	16	2600.0	41.600	0	W9
32	Ø16	16	2975.0	47.600	0	W10
33	Ø16	16	4125.0	66.000	0	W11
34	Ø16	16	2925.0	46.800	0	W2
35	Ø16	16	3825.0	61.200	0	W3
36	Ø16	16	3250.0	52.000	0	W4
37	Ø16	16	2975.0	47.600	0	W5
38	Ø16	16	3950.0	63.200	0	W11
39	Ø16	16	3800.0	60.800	0	W12
40	Ø16	16	4125.0	66.000	0	W13
41	Ø16	16	1850.0	29.600	0	W14

Type	Unit Mass [kg/m]	Total Length [m]	Total Mass [kg]
Ø8	0.395	3343.600	1320.72
Ø10	0.616	118.500	73.00
Ø16	1.579	684.200	1084.77
Ø20	2.466	921.200	2271.68
Ø25	3.854	476.400	1836.05
Grand Total			6550.21

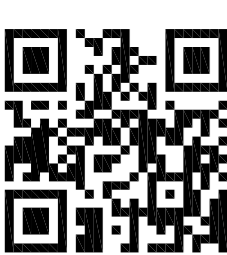
Mark	Type	Quantity	Length [mm]	Total Length [m]	Shape	Members
4	Ø16	88	1850.0	162.800	34	C1, C7, C12, C13, C14
5	Ø16	56	3925.0	219.800	26	C1, C7, C12
6	Ø16	88	3200.0	281.600	11	C1, C7, C12, C13, C14
7	Ø8	78	2900.0	226.200	51	C1, C7
8	Ø8	1679	650.0	1091.350	99	C1, C2, C3, C4, C5, C6, C7, C8, C9, C10, C11, C13, C14
9	Ø8	152	1150.0	174.800	99	C1, C7
10	Ø8	76	2900.0	220.400	51	C1, C7
11	Ø25	48	2325.0	111.600	34	C2, C3, C9
12	Ø25	48	4325.0	207.600	26	C2, C3, C9
13	Ø25	48	3275.0	157.200	11	C2, C3, C9
14	Ø8	225	3300.0	742.500	51	C2, C3, C4, C5, C6, C8, C9, C10, C11
15	Ø8	263	1350.0	355.050	99	C2, C3, C4, C5, C6, C8, C9, C10, C11, C13, C14
16	Ø20	98	2075.0	203.350	34	C4, C5, C6, C8, C10, C11
17	Ø20	98	4100.0	401.800	26	C4, C5, C6, C8, C10, C11
18	Ø20	98	3225.0	316.350	11	C4, C5, C6, C8, C10, C11
19	Ø8	60	2525.0	151.500	56	C9
20	Ø10	15	3300.0	49.500	51	C9
21	Ø10	75	650.0	48.750	99	C9
22	Ø10	15	1350.0	20.250	99	C9
23	Ø8	38	2500.0	95.000	51	C12
24	Ø8	76	950.0	72.200	99	C12
25	Ø8	38	2500.0	95.000	51	C12
26	Ø8	38	3300.0	125.400	51	C13, C14



St. -1 (Basement) 3.2 m							
St. Base (Base) 0 m							
Starter bars	48Ø16 W1	36Ø16 W2	44Ø16 W3	40Ø16 W4	36Ø16 W5	42Ø16 W6	36Ø16 W7

St. -1 (Basement) 3.2 m							
St. Base (Base) 0 m							
Starter bars	44Ø16 W8	32Ø16 W9	36Ø16 W10	46Ø16 W11	44Ø16 W12	48Ø16 W13	26Ø16 W14

Wall Schedule



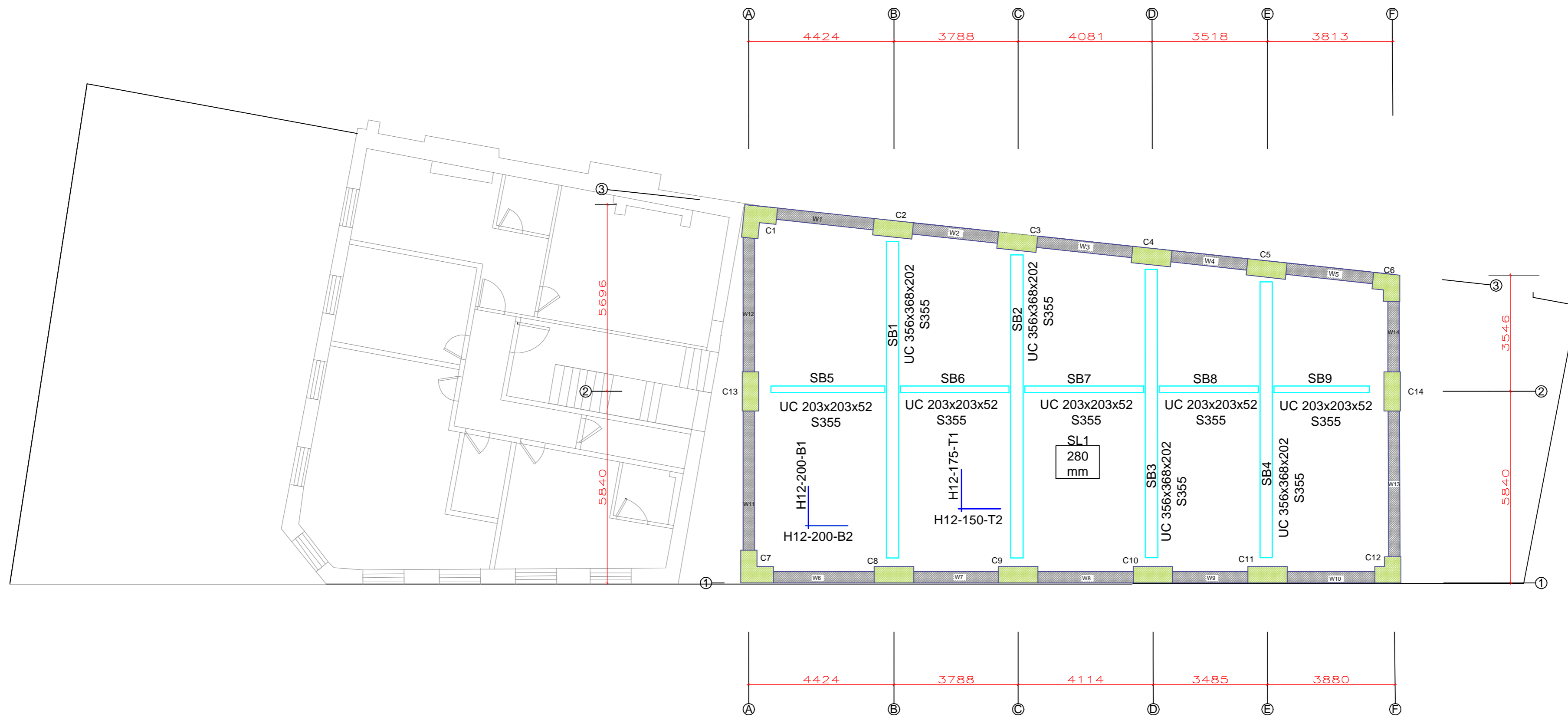
IMPORTANT: SCAN QR CODE TO ENSURE CURRENT REVISION OF STRUCTURAL DRAWINGS AND CALCULATIONS. IF ANY CLARIFICATION IS REQUIRED REGARDING THE STRUCTURAL DETAILS, MATERIALS, OR CONSTRUCTION METHODS, THE ENGINEER MUST BE CONTACTED PRIOR TO PROCEEDING WITH THE WORKS.

ALL NOTES IN THIS DOCUMENT MUST BE READ IN CONJUNCTION WITH THE PROVIDED DETAILS AND ALL RELEVANT ARCHITECTURAL AND OTHER DOCUMENTS PLEASE REFER TO THE PLANNING DRAWINGS AND BUILDING REGULATIONS DRAWINGS FOR ACCURATE DIMENSIONS. DO NOT SCALE THESE DRAWINGS. ALL DIMENSIONS ARE FOR CALCULATION PURPOSES ONLY AND MUST BE VERIFIED ON SITE BY THE CONTRACTOR. ALL EXISTING LOAD-BEARING ELEMENT SPECIFICATIONS MUST BE VERIFIED ON-SITE BY THE CONTRACTOR. IF ANY ON-SITE CONDITIONS DIFFER FROM THE ASSUMPTIONS IN THE DRAWINGS, PLEASE NOTIFY THE ENGINEER PROMPTLY. THE CONTRACTOR IS RESPONSIBLE FOR ALL TEMPORARY WORKS TO ENSURE STABILITY AND SAFETY THROUGHOUT THE PROCESS. DO NOT USE THIS DOC WITHOUT BUILDING CONTROL APPROVAL.

Client/Site Address:	Project:	Title:	Drawn by:	Date: 24/02/2026	JOB NO: MU240126	REVISION: 0	DRW NO: 3
336 Green Lanes, London N4 1BY	Structural Design & Calculations For Proposed Four Storey New Build	Column & Wall Schedule	TL				
			Checked by:				

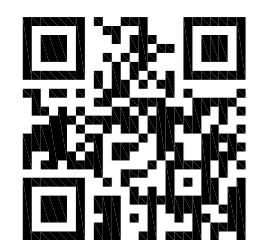


Type	Unit Mass [kg/m]	Total Length [m]	Total Mass [kg]
Ø12	0.888	5135.077	4559.95
Total			4559.95
Total + 10.00 % slab detailing allowance			5015.94




Top Of Basement Arrangements

Scale 1:100



IMPORTANT: SCAN QR CODE TO ENSURE CURRENT REVISION OF STRUCTURAL DRAWINGS AND CALCULATIONS. IF ANY CLARIFICATION IS REQUIRED REGARDING THE STRUCTURAL DETAILS, MATERIALS, OR CONSTRUCTION METHODS THE ENGINEER MUST BE CONTACTED PRIOR TO PROCEEDING WITH THE WORKS.

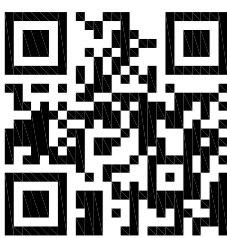
ALL NOTES IN THIS DOCUMENT MUST BE READ IN CONJUNCTION WITH THE PROVIDED DETAILS AND ALL RELEVANT ARCHITECTURAL AND OTHER DOCUMENTS PLEASE REFER TO THE PLANNING DRAWINGS AND BUILDING REGULATIONS DRAWINGS FOR ACCURATE DIMENSIONS. DO NOT SCALE THESE DRAWINGS. ALL DIMENSIONS ARE FOR CALCULATION PURPOSES ONLY AND MUST BE VERIFIED ON SITE BY THE CONTRACTOR. ALL EXISTING LOAD-BEARING ELEMENT SPECIFICATIONS MUST BE VERIFIED ON-SITE BY THE CONTRACTOR. IF ANY ON-SITE CONDITIONS DIFFER FROM THE ASSUMPTIONS IN THE DRAWINGS, PLEASE NOTIFY THE ENGINEER PROMPTLY. THE CONTRACTOR IS RESPONSIBLE FOR ALL TEMPORARY WORKS TO ENSURE STABILITY AND SAFETY THROUGHOUT THE PROCESS. DO NOT USE THIS DOC WITHOUT BUILDING CONTROL APPROVAL.

Client/Site Address:	Project:	Title:	Drawn by:	 Date: 24/02/2026 Scale: A2	JOB NO:	REVISION:	DRW NO:
336 Green Lanes, London N4 1BY	Structural Design & Calculations For Proposed Four Storey New Build	Proposed Structure Over Basement	TL				
			Checked by:				
					MU240126	0	4




Type	Unit Mass [kg/m]	Total Length [m]	Total Mass [kg]
Ø12	0.888	2214.159	1966.17
Ø16	1.579	2309.069	3646.02
Ø20	2.466	1726.447	4257.42
Total			9869.61
Total + 10.00 % slab detailing allowance			10856.57

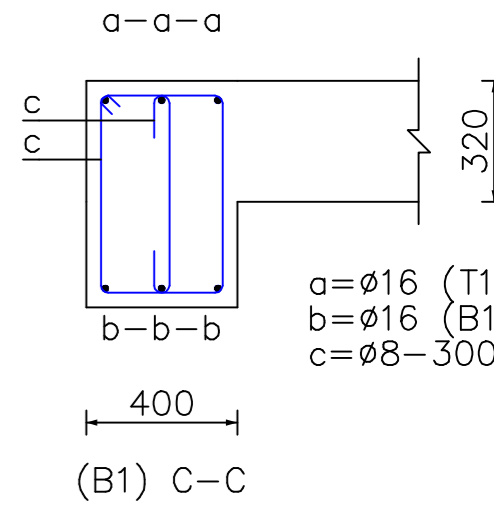
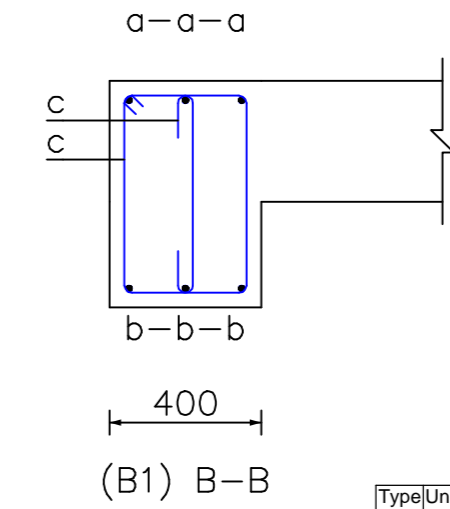
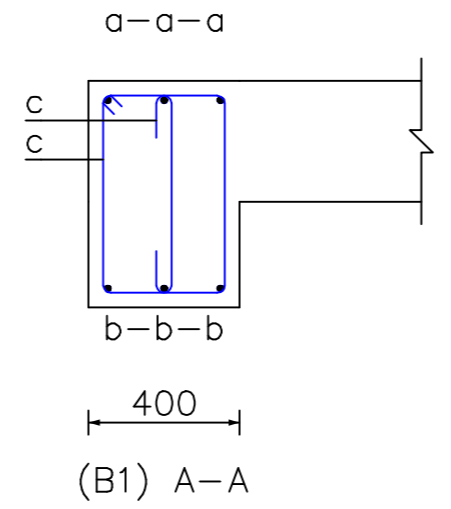
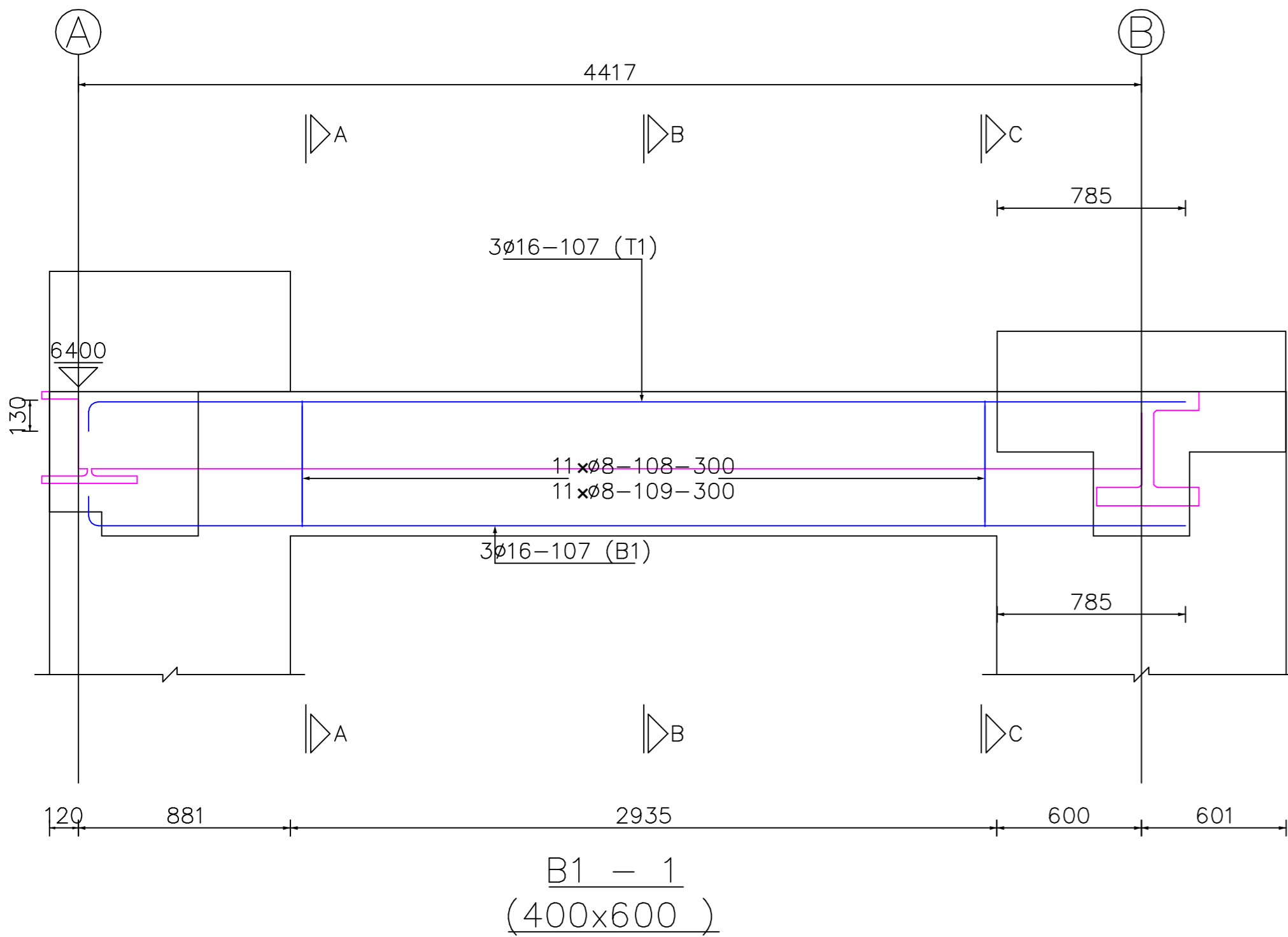
Top Of Ground Floor Arrangements Scale 1:100



IMPORTANT: SCAN QR CODE TO ENSURE CURRENT REVISION OF STRUCTURAL DRAWINGS AND CALCULATIONS. IF ANY CLARIFICATION IS REQUIRED REGARDING THE STRUCTURAL DETAILS, MATERIALS, OR CONSTRUCTION METHODS THE ENGINEER MUST BE CONTACTED PRIOR TO PROCEEDING WITH THE WORKS.

ALL NOTES IN THIS DOCUMENT MUST BE READ IN CONJUNCTION WITH THE PROVIDED DETAILS AND ALL RELEVANT ARCHITECTURAL AND OTHER DOCUMENTS PLEASE REFER TO THE PLANNING DRAWINGS AND BUILDING REGULATIONS DRAWINGS FOR ACCURATE DIMENSIONS. DO NOT SCALE THESE DRAWINGS. ALL DIMENSIONS ARE FOR CALCULATION PURPOSES ONLY AND MUST BE VERIFIED ON SITE BY THE CONTRACTOR. ALL EXISTING LOAD-BEARING ELEMENT SPECIFICATIONS MUST BE VERIFIED ON-SITE BY THE CONTRACTOR. IF ANY ON-SITE CONDITIONS DIFFER FROM THE ASSUMPTIONS IN THE DRAWINGS, PLEASE NOTIFY THE ENGINEER PROMPTLY. THE CONTRACTOR IS RESPONSIBLE FOR ALL TEMPORARY WORKS TO ENSURE STABILITY AND SAFETY THROUGHOUT THE PROCESS. DO NOT USE THIS DOC WITHOUT BUILDING CONTROL APPROVAL.

Client/Site Address:	Project:	Title:	Drawn by:	 Date: 24/02/2026 Scale: A2	JOB NO:	REVISION:	DRW NO:
336 Green Lanes, London N4 1BY	Structural Design & Calculations For Proposed Four Storey New Build	Proposed Structure Over Ground Floor	TL				
			Checked by:				



Type	Unit Mass [kg/m]	Total Length [m]	Total Mass [kg]
Ø8	0.395	29.700	11.73
Ø16	1.579	28.200	44.53
Grand Total			56.26

Mark	Type	Quantity	Length [mm]	Total Length [m]	Shape	Members
107	Ø16	6	4700.0	28.200	11	B1
108	Ø8	11	800.0	8.800	99	B1
109	Ø8	11	1900.0	20.900	51	B1

Type	Unit Mass [kg/m]	Total Length [m]	Total Mass [kg]
Ø8	0.395	27.000	10.67
Ø16	1.579	24.600	38.84
Grand Total			49.51

Mark	Type	Quantity	Length [mm]	Total Length [m]	Shape	Members
108	Ø8	10	800.0	8.000	99	B2
109	Ø8	10	1900.0	19.000	51	B2
110	Ø16	6	4100.0	24.600	11	B2

Type	Unit Mass [kg/m]	Total Length [m]	Total Mass [kg]
Ø8	0.395	29.700	11.73
Ø16	1.579	26.400	41.69
Grand Total			53.42

Mark	Type	Quantity	Length [mm]	Total Length [m]	Shape	Members
108	Ø8	11	800.0	8.800	99	B3
109	Ø8	11	1900.0	20.900	51	B3
111	Ø16	6	4400.0	26.400	11	B3

Type	Unit Mass [kg/m]	Total Length [m]	Total Mass [kg]
Ø8	0.395	24.300	9.60
Ø16	1.579	22.800	36.00
Grand Total			45.60

Mark	Type	Quantity	Length [mm]	Total Length [m]	Shape	Members
108	Ø8	9	800.0	7.200	99	B4
109	Ø8	9	1900.0	17.100	51	B4
112	Ø16	6	3800.0	22.800	11	B4

Type	Unit Mass [kg/m]	Total Length [m]	Total Mass [kg]
Ø8	0.395	27.000	10.67
Ø16	1.579	25.800	40.74
Grand Total			51.40

Mark	Type	Quantity	Length [mm]	Total Length [m]	Shape	Members
108	Ø8	10	800.0	8.000	99	B5
109	Ø8	10	1900.0	19.000	51	B5
113	Ø16	6	4300.0	25.800	21	B5

Type	Unit Mass [kg/m]	Total Length [m]	Total Mass [kg]
Ø8	0.395	29.700	11.73
Ø16	1.579	28.200	44.53
Grand Total			56.26

Mark	Type	Quantity	Length [mm]	Total Length [m]	Shape	Members
108	Ø8	11	800.0	8.800	99	B6
109	Ø8	11	1900.0	20.900	51	B6
114	Ø16	6	4700.0	28.200	11	B6

Type	Unit Mass [kg/m]	Total Length [m]	Total Mass [kg]
Ø8	0.395	27.000	10.67
Ø16	1.579	24.300	38.37
Grand Total			49.03

Mark	Type	Quantity	Length [mm]	Total Length [m]	Shape	Members
108	Ø8	10	800.0	8.000	99	B7
109	Ø8	10	1900.0	19.000	51	B7
115	Ø16	6	4050.0	24.300	11	B7

Type	Unit Mass [kg/m]	Total Length [m]	Total Mass [kg]
Ø8	0.395	29.700	11.73
Ø16	1.579	26.400	41.69
Grand Total			53.42

Mark	Type	Quantity	Length [mm]	Total Length [m]	Shape	Members
108	Ø8	11	800.0	8.800	99	B8
109	Ø8	11	1900.0	20.900	51	B8
116	Ø16	6	4400.0	26.400	11	B8

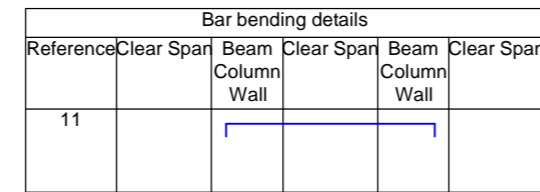
Type	Unit Mass [kg/m]	Total Length [m]	Total Mass [kg]
Ø8	0.395	24.300	9.60
Ø16	1.579	22.500	35.53
Grand Total			45.13

Mark	Type	Quantity	Length [mm]	Total Length [m]	Shape	Members
108	Ø8	9	800.0	7.200	99	B9
109	Ø8	9	1900.0	17.100	51	B9
117	Ø16	6	3750.0	22.500	11	B9

Type	Unit Mass [kg/m]	Total Length [m]	Total Mass [kg]
Ø8	0.395	27.000	10.67
Ø16	1.579	25.200	39.79
Grand Total			50.46

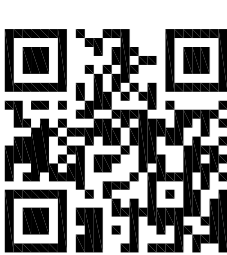
Mark	Type	Quantity	Length [mm]	Total Length [m]	Shape	Members
108	Ø8	10	800.0	8.000	99	B10
109	Ø8	10	1900.0	19.000	51	B10
118	Ø16	6	4200.0	25.200	21	B10

Concrete Beam Schedule - St. 0 (GF)							
Mark	Size (WxD)	Bottom Bars	Top Bars		Links	Side Bars	Revision / Notes
			Left	Rig			
B6	400x600	3Ø16-11			2Ø8-300 (3 legs, 100.00%)		Single Span 2 beams in group 1 beam(s) in schedule
B7	400x600	3Ø16-11			2Ø8-300 (3 legs, 100.00%)		Single Span 4 beams in group 1 beam(s) in schedule
B8	400x600	3Ø16-11			2Ø8-300 (3 legs, 100.00%)		Single Span 2 beams in group 1 beam(s) in schedule
B9	400x600	3Ø16-11			2Ø8-300 (3 legs, 100.00%)		Single Span 2 beams in group 1 beam(s) in schedule
B10	400x600	3Ø16-11			2Ø8-300 (3 legs, 100.00%)		Single Span 4 beams in group 1 beam(s) in schedule
B5	400x600	3Ø16-11			2Ø8-300 (3 legs, 100.00%)		Single Span 4 beams in group 1 beam(s) in schedule
B4	400x600	3Ø16-11			2Ø8-300 (3 legs, 100.00%)		Single Span 2 beams in group 1 beam(s) in schedule
B3	400x600	3Ø16-11			2Ø8-300 (3 legs, 100.00%)		Single Span 2 beams in group 1 beam(s) in schedule
B1	400x600	3Ø16-11			2Ø8-300 (3 legs, 100.00%)		Single Span 2 beams in group 1 beam(s) in schedule
B2	400x600	3Ø16-11			2Ø8-300 (3 legs, 100.00%)		Single Span 4 beams in group 1 beam(s) in schedule




Bar Bending and Beam Schedule Notes
Link support regions: 25.00% of span length, 25.00% of cantilever span length (unless noted otherwise)

Beam Schedule









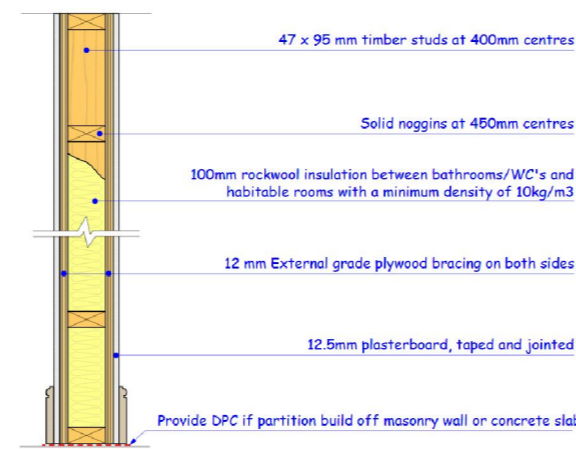
IMPORTANT: SCAN QR CODE TO ENSURE CURRENT REVISION OF STRUCTURAL DRAWINGS AND CALCULATIONS.
IF ANY CLARIFICATION IS REQUIRED REGARDING THE STRUCTURAL DETAILS, MATERIALS, OR CONSTRUCTION METHODS THE ENGINEER MUST BE CONTACTED PRIOR TO PROCEEDING WITH THE WORKS.

ALL NOTES IN THIS DOCUMENT MUST BE READ IN CONJUNCTION WITH THE PROVIDED DETAILS AND ALL RELEVANT ARCHITECTURAL AND OTHER DOCUMENTS PLEASE REFER TO THE PLANNING DRAWINGS AND BUILDING REGULATIONS DRAWINGS FOR ACCURATE DIMENSIONS. DO NOT SCALE THESE DRAWINGS. ALL DIMENSIONS ARE FOR CALCULATION PURPOSES ONLY AND MUST BE VERIFIED ON SITE BY THE CONTRACTOR. ALL EXISTING LOAD-BEARING ELEMENT SPECIFICATIONS MUST BE VERIFIED ON-SITE BY THE CONTRACTOR. IF ANY ON-SITE CONDITIONS DIFFER FROM THE ASSUMPTIONS IN THE DRAWINGS, PLEASE NOTIFY THE ENGINEER PROMPTLY. THE CONTRACTOR IS RESPONSIBLE FOR ALL TEMPORARY WORKS TO ENSURE STABILITY AND SAFETY THROUGHOUT THE PROCESS. DO NOT USE THIS DOC WITHOUT BUILDING CONTROL APPROVAL.

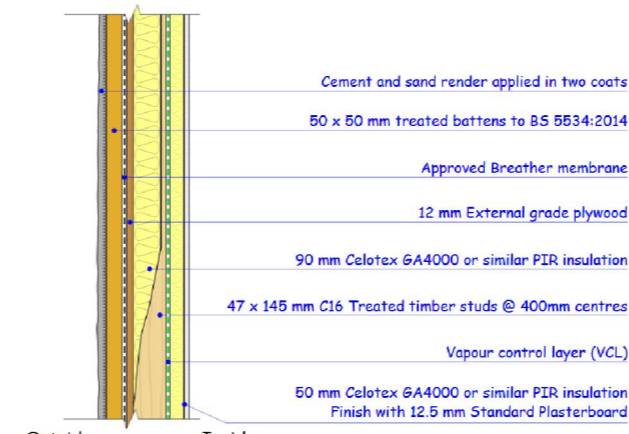
Client/Site Address:	Project:	Title:	Drawn by:	 Date: 24/02/2026 Scale: A2	JOB NO: MU240126	REVISION: 0	DRW NO: 6
336 Green Lanes, London N4 1BY	Structural Design & Calculations For Proposed Four Storey New Build	Beam Schedule	TL Checked by:				

LEGEND

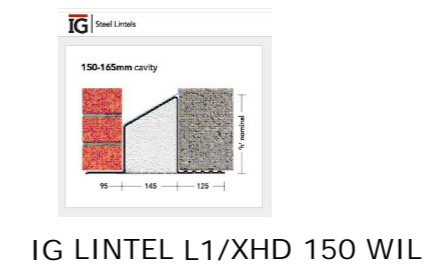
-  BRICK WALL
-  INSULATION
-  BLOCK WALL
-  TIMBER WALL
-  CEILING/FLOOR JOISTS
-  LINTELS



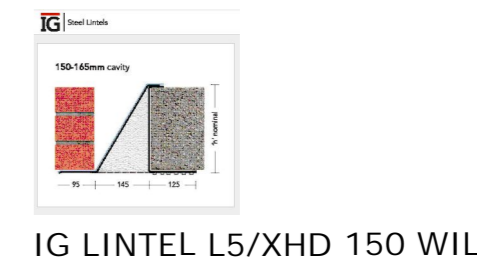
INTERNAL TIMBER PARTITION DETAIL (SCALE 1/20)



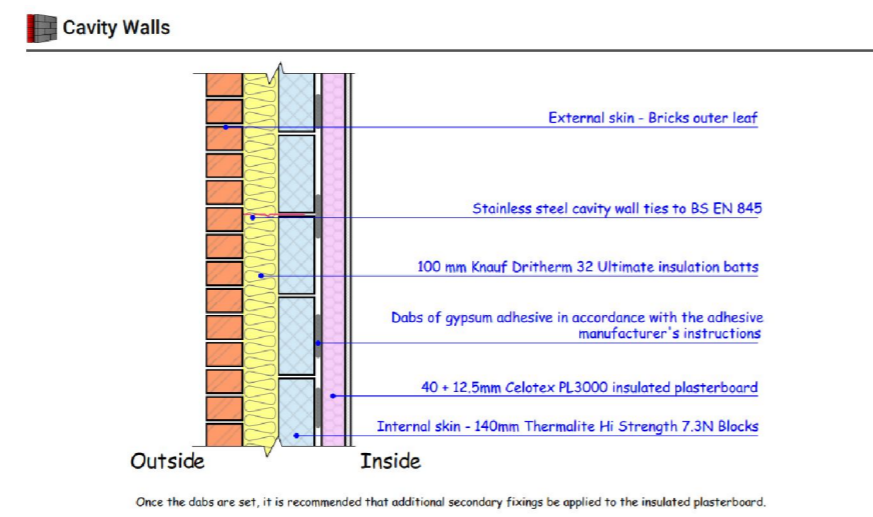
EXTERNAL TIMBER WALL DETAIL (SCALE 1/40)



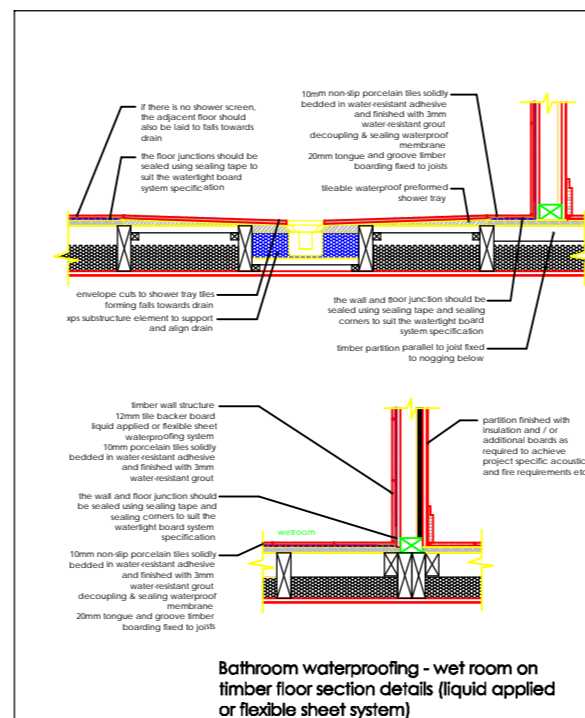
IG LINTEL L1/XHD 150 WIL



IG LINTEL L5/XHD 150 WIL

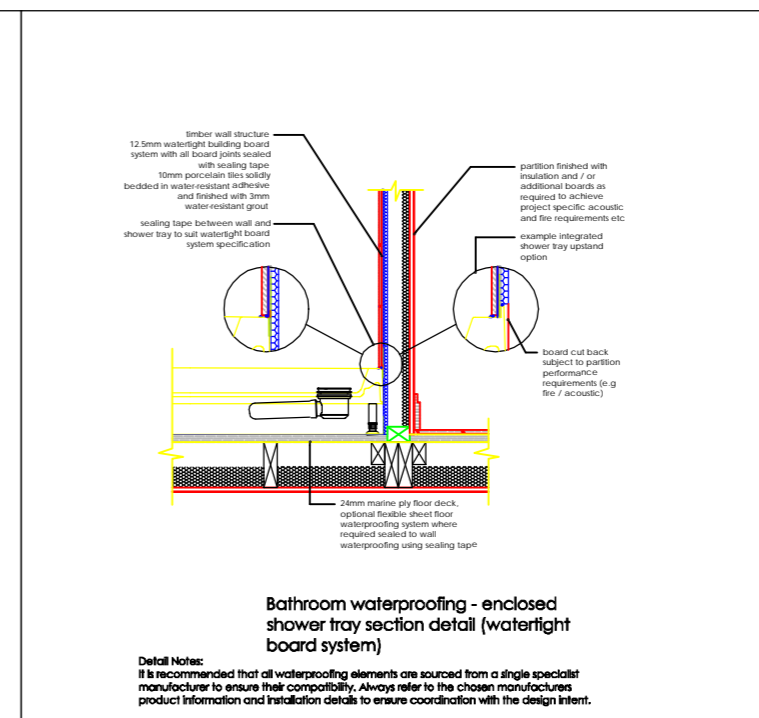


Once the dabs are set, it is recommended that additional secondary fixings be applied to the insulated plasterboard.



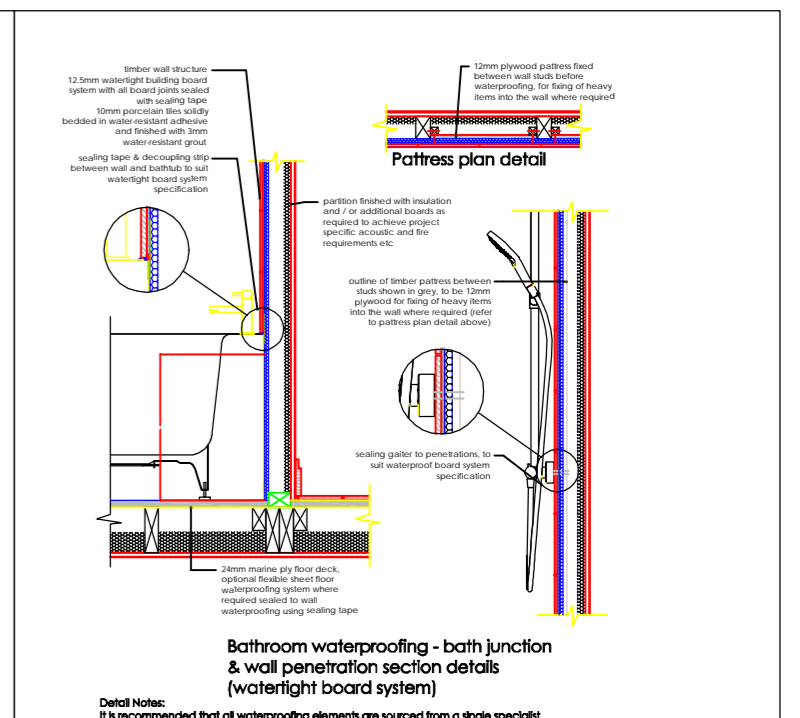
Bathroom waterproofing - wet room on timber floor section details (liquid applied or flexible sheet system)

Detail Notes:
 It is recommended that all waterproofing elements are sourced from a single specialist manufacturer to ensure their compatibility. Always refer to the chosen manufacturer's product information and installation details to ensure coordination with the design intent.
 Tiling should be designed and installed in accordance with BS 5385-1 (wall and floor tiling in normal internal conditions). It is important that the substrate for tiling is capable of supporting the weight of the tiles. Cymium based boards are generally unsuitable backing surfaces for wall tiling in areas subject to frequent wetting.
 It is recommended that all waterproofing solutions hold appropriate certifications such as a European Assessment Document (EAD) in accordance with HNBC requirements (see HNBC technical guidance note 9.2/04).



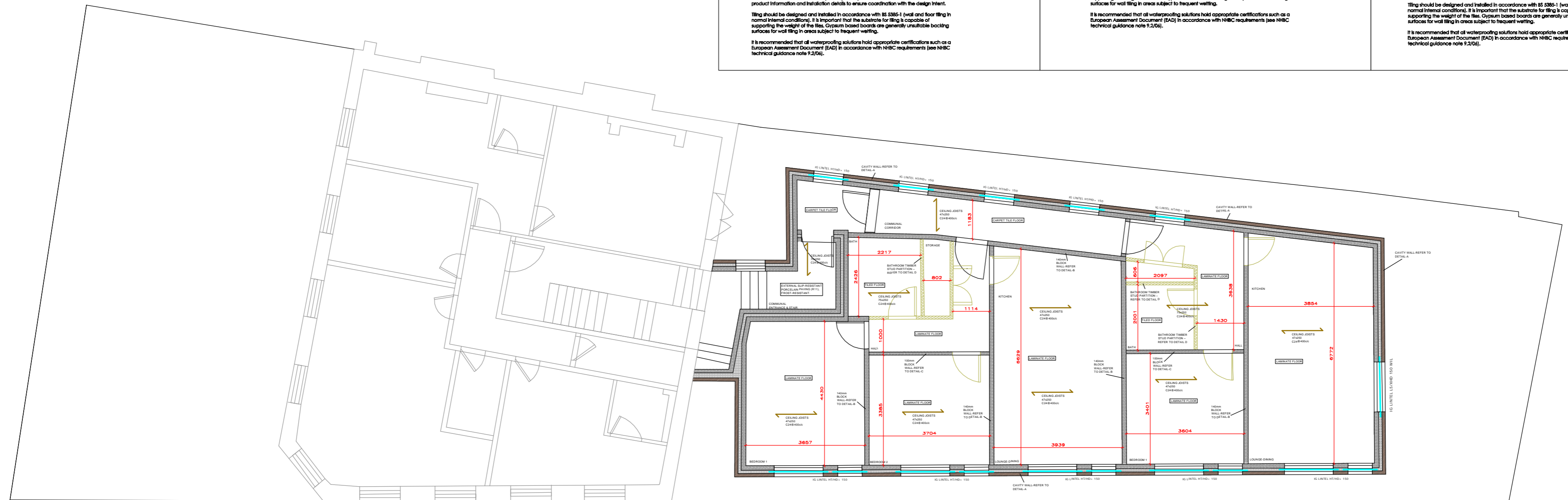
Bathroom waterproofing - enclosed shower tray section detail (watertight board system)

Detail Notes:
 It is recommended that all waterproofing elements are sourced from a single specialist manufacturer to ensure their compatibility. Always refer to the chosen manufacturer's product information and installation details to ensure coordination with the design intent.
 Tiling should be designed and installed in accordance with BS 5385-1 (wall and floor tiling in normal internal conditions). It is important that the substrate for tiling is capable of supporting the weight of the tiles. Cymium based boards are generally unsuitable backing surfaces for wall tiling in areas subject to frequent wetting.
 It is recommended that all waterproofing solutions hold appropriate certifications such as a European Assessment Document (EAD) in accordance with HNBC requirements (see HNBC technical guidance note 9.2/04).



Bathroom waterproofing - bath junction & wall penetration section details (watertight board system)

Detail Notes:
 It is recommended that all waterproofing elements are sourced from a single specialist manufacturer to ensure their compatibility. Always refer to the chosen manufacturer's product information and installation details to ensure coordination with the design intent.
 Tiling should be designed and installed in accordance with BS 5385-1 (wall and floor tiling in normal internal conditions). It is important that the substrate for tiling is capable of supporting the weight of the tiles. Cymium based boards are generally unsuitable backing surfaces for wall tiling in areas subject to frequent wetting.
 It is recommended that all waterproofing solutions hold appropriate certifications such as a European Assessment Document (EAD) in accordance with HNBC requirements (see HNBC technical guidance note 9.2/04).




Proposed First Floor Plan









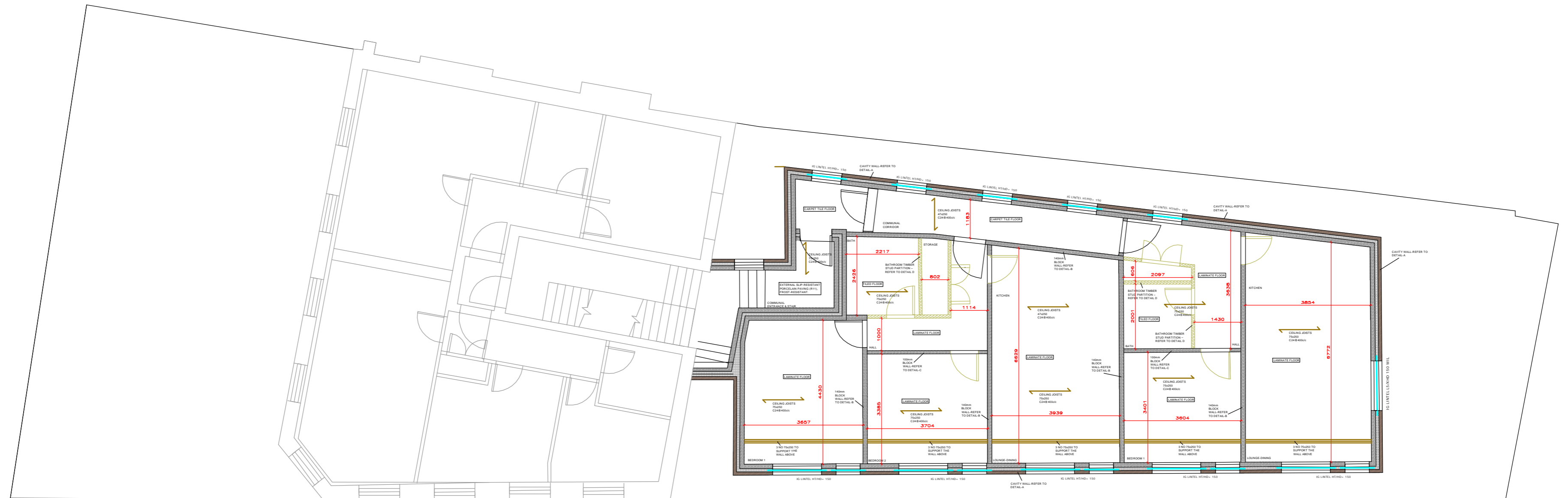
IMPORTANT: SCAN QR CODE TO ENSURE CURRENT REVISION OF STRUCTURAL DRAWINGS AND CALCULATIONS. IF ANY CLARIFICATION IS REQUIRED REGARDING THE STRUCTURAL DETAILS, MATERIALS, OR CONSTRUCTION METHODS THE ENGINEER MUST BE CONTACTED PRIOR TO PROCEEDING WITH THE WORKS.

ALL NOTES IN THIS DOCUMENT MUST BE READ IN CONJUNCTION WITH THE PROVIDED DETAILS AND ALL RELEVANT ARCHITECTURAL AND OTHER DOCUMENTS PLEASE REFER TO THE PLANNING DRAWINGS AND BUILDING REGULATIONS DRAWINGS FOR ACCURATE DIMENSIONS. DO NOT SCALE THESE DRAWINGS. ALL DIMENSIONS ARE FOR CALCULATION PURPOSES ONLY AND MUST BE VERIFIED ON SITE BY THE CONTRACTOR. ALL EXISTING LOAD-BEARING ELEMENT SPECIFICATIONS MUST BE VERIFIED ON-SITE BY THE CONTRACTOR. IF ANY ON-SITE CONDITIONS DIFFER FROM THE ASSUMPTIONS IN THE DRAWINGS, PLEASE NOTIFY THE ENGINEER PROMPTLY. THE CONTRACTOR IS RESPONSIBLE FOR ALL TEMPORARY WORKS TO ENSURE STABILITY AND SAFETY THROUGHOUT THE PROCESS. DO NOT USE THIS DOC WITHOUT BUILDING CONTROL APPROVAL.

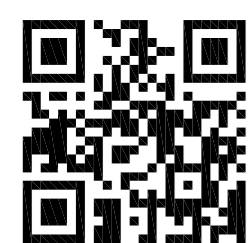
Client/Site Address: 336 Green Lanes, London N4 1BY	Project: Structural Design & Calculations For Proposed Four Storey New Build	Title: Proposed First Floor General Arrangements	Drawn by: TL	 Date: 24/02/2026 Scale: A2	JOB NO: MU240126 REVISION: 0 DRW NO: 7
			Checked by:		

LEGEND

-  BRICK WALL
-  INSULATION
-  BLOCK WALL
-  TIMBER WALL
-  CEILING/FLOOR JOISTS
-  LINTELS




Proposed Second Floor Plan









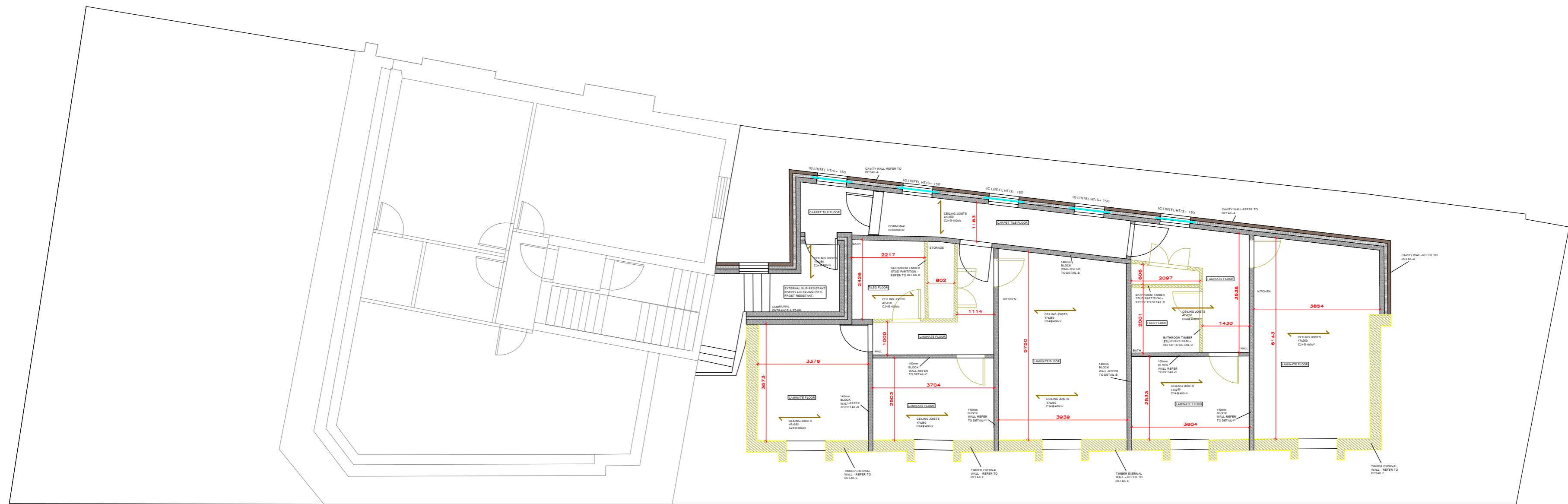
IMPORTANT: SCAN QR CODE TO ENSURE CURRENT REVISION OF STRUCTURAL DRAWINGS AND CALCULATIONS. IF ANY CLARIFICATION IS REQUIRED REGARDING THE STRUCTURAL DETAILS, MATERIALS, OR CONSTRUCTION METHODS THE ENGINEER MUST BE CONTACTED PRIOR TO PROCEEDING WITH THE WORKS.

ALL NOTES IN THIS DOCUMENT MUST BE READ IN CONJUNCTION WITH THE PROVIDED DETAILS AND ALL RELEVANT ARCHITECTURAL AND OTHER DOCUMENTS PLEASE REFER TO THE PLANNING DRAWINGS AND BUILDING REGULATIONS DRAWINGS FOR ACCURATE DIMENSIONS. DO NOT SCALE THESE DRAWINGS. ALL DIMENSIONS ARE FOR CALCULATION PURPOSES ONLY AND MUST BE VERIFIED ON SITE BY THE CONTRACTOR. ALL EXISTING LOAD-BEARING ELEMENT SPECIFICATIONS MUST BE VERIFIED ON-SITE BY THE CONTRACTOR. IF ANY ON-SITE CONDITIONS DIFFER FROM THE ASSUMPTIONS IN THE DRAWINGS, PLEASE NOTIFY THE ENGINEER PROMPTLY. THE CONTRACTOR IS RESPONSIBLE FOR ALL TEMPORARY WORKS TO ENSURE STABILITY AND SAFETY THROUGHOUT THE PROCESS. DO NOT USE THIS DOC WITHOUT BUILDING CONTROL APPROVAL.

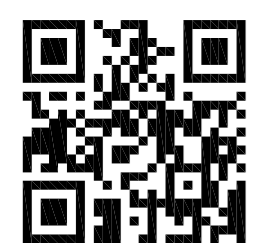
Client/Site Address:	Project:	Title:	Drawn by:		Date: 24/02/2026	JOB NO: MU240126	REVISION: 0	DRW NO: 8
336 Green Lanes, London N4 1BY	Structural Design & Calculations For Proposed Four Storey New Build	Proposed Second Floor General Arrangements	TL					
			Checked by:					

LEGEND

-  BRICK WALL
-  INSULATION
-  BLOCK WALL
-  TIMBER WALL
-  CEILING/FLOOR JOISTS
-  LINTELS




Proposed Third Floor Plan



IMPORTANT: SCAN QR CODE TO ENSURE CURRENT REVISION OF STRUCTURAL DRAWINGS AND CALCULATIONS. IF ANY CLARIFICATION IS REQUIRED REGARDING THE STRUCTURAL DETAILS, MATERIALS, OR CONSTRUCTION METHODS THE ENGINEER MUST BE CONTACTED PRIOR TO PROCEEDING WITH THE WORKS.

ALL NOTES IN THIS DOCUMENT MUST BE READ IN CONJUNCTION WITH THE PROVIDED DETAILS AND ALL RELEVANT ARCHITECTURAL AND OTHER DOCUMENTS PLEASE REFER TO THE PLANNING DRAWINGS AND BUILDING REGULATIONS DRAWINGS FOR ACCURATE DIMENSIONS. DO NOT SCALE THESE DRAWINGS. ALL DIMENSIONS ARE FOR CALCULATION PURPOSES ONLY AND MUST BE VERIFIED ON SITE BY THE CONTRACTOR. ALL EXISTING LOAD-BEARING ELEMENT SPECIFICATIONS MUST BE VERIFIED ON-SITE BY THE CONTRACTOR. IF ANY ON-SITE CONDITIONS DIFFER FROM THE ASSUMPTIONS IN THE DRAWINGS, PLEASE NOTIFY THE ENGINEER PROMPTLY. THE CONTRACTOR IS RESPONSIBLE FOR ALL TEMPORARY WORKS TO ENSURE STABILITY AND SAFETY THROUGHOUT THE PROCESS. DO NOT USE THIS DOC WITHOUT BUILDING CONTROL APPROVAL.

Client/Site Address:	Project:	Title:	Drawn by:				
336 Green Lanes, London N4 1BY	Structural Design & Calculations For Proposed Four Storey New Build	Proposed Third Floor General Arrangements	TL				
			Checked by:				
				Date: 24/02/2026	JOB NO:	REVISION:	DRW NO:
				Scale: A2	MU240126	0	9